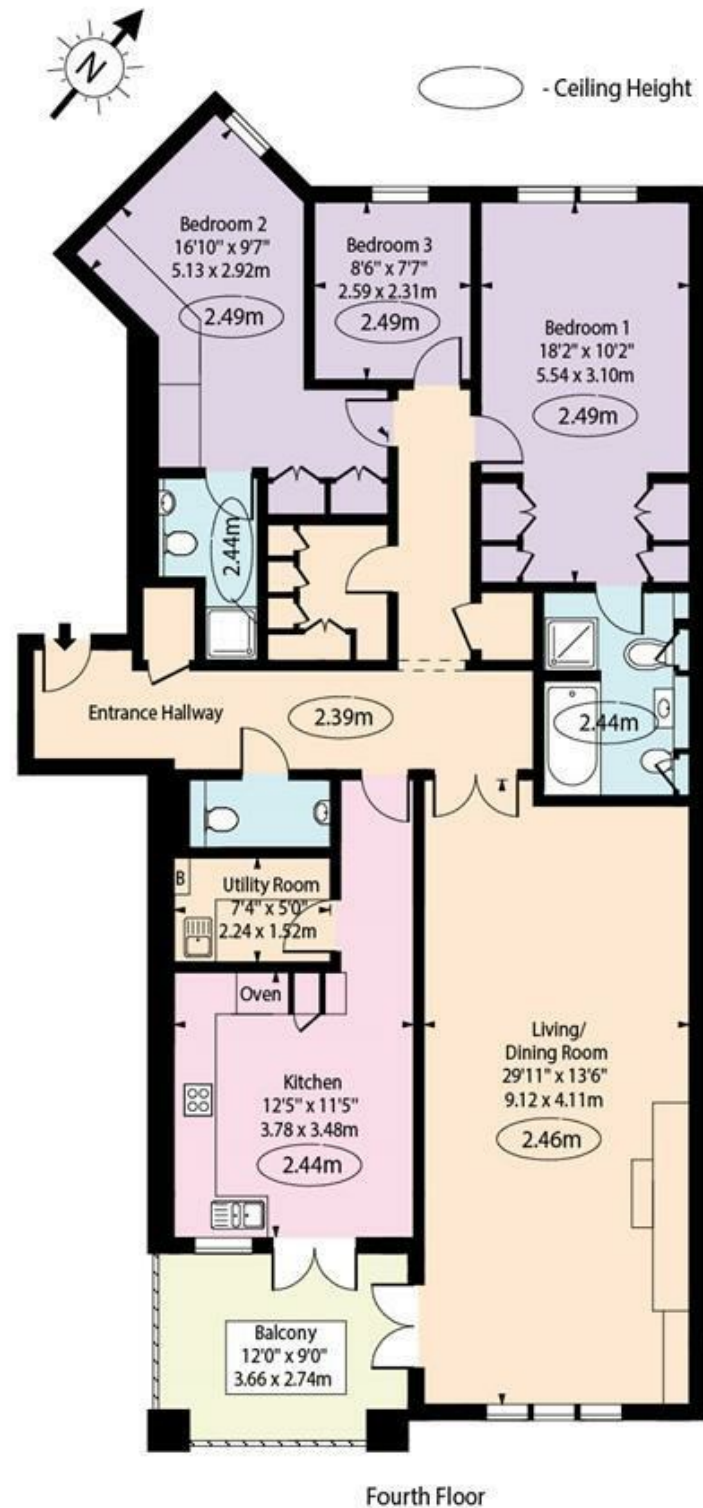


Mountview Close,
Golders Hill Park, NW11



Fourth Floor

Approx Gross Internal Area 1420 Sq Ft - 131.92 Sq M

For Illustration Purposes Only - Not To Scale Floor Plan by www.nogaphotostudio.com Ref: No.53931

This floor plan should be used as a general outline for guidance only. Any intending purchaser or lessee should satisfy themselves by inspection, searches, enquiries and full survey as to the correctness of each statement. Any areas, measurements or distances quoted are approximate and should not be used to value a property or be the basis of any sale or let.



newhomes@glentree.com

020 8731 9500

www.glentree.com



Mountview Close, NW11

A beautifully presented 3 bedroom, 2 bathroom, 4th floor apartment of approximately 1420 sq ft, situated in this luxury & highly desirable block with 24hr Concierge, gated entrance, secure underground parking, beautifully manicured communal gardens and resident's gym.

Apartments in Mountview Close, NW11, are very rare and exceptionally sought after. The building is situated on the corner of North End Road and Hampstead Way overlooking Golders Hill Park.

The property comprises of 3 Bedrooms, 2 en-suite bathrooms, large double reception room with access to balcony, kitchen/breakfast room, with access to balcony, separate utility room, guest cloakroom; storage room in basement & 2 underground car spaces.

Early viewing is highly recommended

3 BEDROOMS: 2 BATHROOMS (BOTH EN SUITE): LOUNGE/DINING ROOM: FULLY FITTED KITCHEN/BREAKFAST ROOM: GUEST CLOAKROOM: BALCONY ACCESSED FROM RECEPTION AND KITCHEN: UTILITY ROOM; UNDERGROUND PARKING: COMMUNAL GYM

JOINT SOLE AGENT

£1,975,000



NEW HOMES 020 8731 9500
FAX 020 8209 0307

E newhomes@glentree.com
W www.glentree.com

Glentree Estates Ltd
698 Finchley Road
London NW11 7NE

